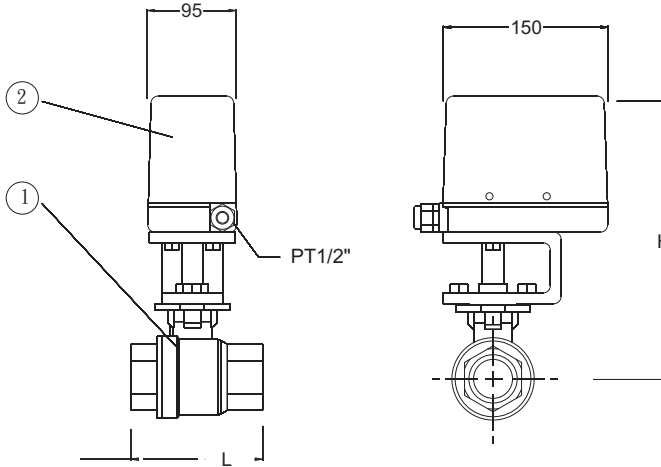




Features:

1. MK 7 actuator is fit for assembling with 2 way / 3 way ball valves.
2. Material of ball valve can be SCS 13 or SCS 14.
3. Acting time is 7 seconds from close position to open position.
4. Pressure range from 0 to 10 kg*f/cm².
5. Potentiometer unit 1K Ohm.(Optional accessories)

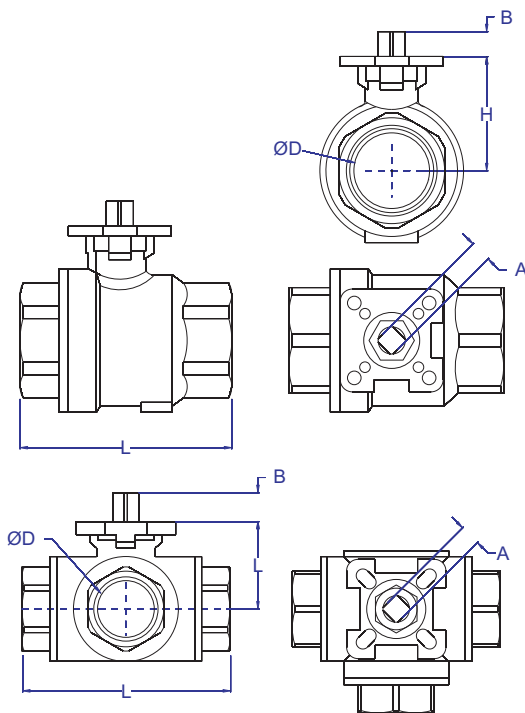


Parts Lists & material specifications

No.	Descriptions	Material
1	Ball Valve	SCS13 OR SCS14
2	Motor Actuator	Assembly

Dimensions (2Way Full Port Ball Valve)

Model	Size	L (mm)	H (mm)	(kg)
MK7-SSP15	15A	69	223	3.5
MK7-SSP20	20A	80	228	3.6
MK7-SSP25	25A	90	233	3.8
MK7-SSP32	32A	106	240	4.2
MK7-SSP40	40A	120	250	5.5
MK7-SSP50	50A	140	260	8.5



Valve performance chart

Fluid	Air, Oil, and Water
Fluid Temp.	-5° ~ 120°
Max. pressure Diff.	10 kg*f/cm ²
Max. Pressure	10 kg*f/cm ²
Test pressure	20 kg*f/cm ²
Fluid direction	No limitation
Rated voltage	AC 100, 110V 50/60Hz
	AC 200, 220V 50/60Hz
Power consumption	80VA
Acting time	7 / seconds (60Hz)
	7.5 / seconds (50Hz)
Ambient Temp.	0 ~ 50°
Installation	Vertical ± 15°
Insulation	Indoor / Outdoor

2Way Full Port Ball Valve Dimensions

Size	ØD (mm)	L (mm)	H (mm)	A (mm)	B (mm)	ISO 5211	Weight (kg)
1/2"	15	69	35	9	10	F03-F04	0.4
3/4"	20	80	39	9	10	F03-F04	0.5
1"	25.4	90	45	11	14	F04-F05	0.9
1 1/4"	32	106	56	11	14	F04-F05	1.4
1 1/2"	38	120	63	14	19.5	F05-F07	2
2"	50	140	75	14	19.5	F05-F07	3.4

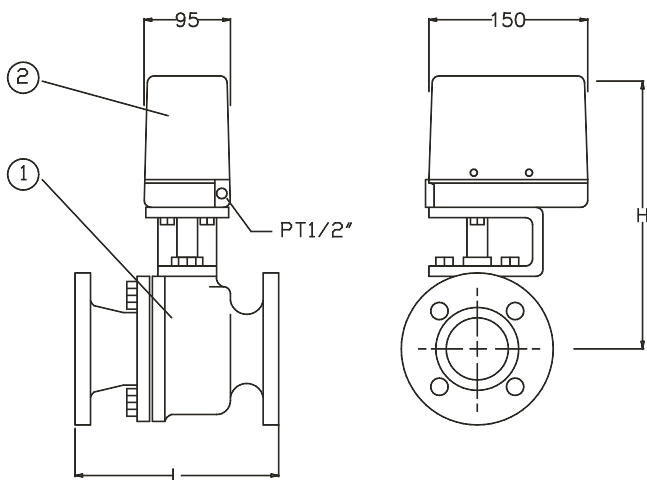
3Way Full Port Ball Valve(L-type or T-type) Dimensions

Size	ØD (mm)	L (mm)	H (mm)	A (mm)	B (mm)	ISO 5211	Weight (kg)
1/2"	15	75	38	9	10	F03-F04	0.9
3/4"	20	86	41	9	10	F03-F04	1.1
1"	25.4	110	47	11	14	F04-F05	1.7
1 1/2"	38	137	68	14	19.5	F05-F07	3.4
2"	50	158	80	14	19.5	F07	6.8



Features:

1. MK 7 actuator is fit for assembling with 2 way / 3 way ball valves.
2. Material of ball valve can be FC 20, SCS13, or SCS14.
3. Acting time is 7 seconds from close position to open position.
4. Pressure range from 0 to 10 kg*f/cm².
5. Potentiometer unit 1K Ohm.(Optional accessories)



Parts Lists & material specifications

NO.	Descriptions	Material
1	Ball valve	FC 20, SCS13, SCS14
2	Motor actuator	Assembly

Dimensions

Model	Size	JIS 10K	L (mm)	H (mm)	Weight (kg)
MK7-20F	20A	FF	120	247	6.5
MK7-25F	25A	FF	130	247	7.5
MK7-32F	32A	FF	140	254	8.9
MK7-40F	40A	FF	165	267	10.0
MK7-50F	50A	FF	180	272	11.5
MK7-65F	65A	FF	190	290	15.5
MK7-80F	80A	FF	200	303	17.0

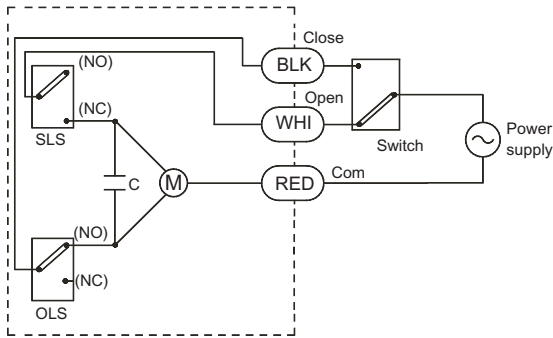
Valve performance chart

Fluid	Air, Oil, and Water
Fluid Temp.	-5° ~ 120°
Max. pressure Diff.	10 kg*f/cm ²
Max. Pressure	10 kg*f/cm ²
Test pressure	20 kg*f/cm ²
Fluid direction	No limitation
Rated voltage	AC 100, 110V 50/60Hz
	AC 200, 220V 50/60Hz
Power consumption	80VA
Acting time	7 / seconds (60Hz)
	7.5 / seconds (50Hz)
Ambient Temp.	0 ~ 50°
Installation	Vertical ± 15°
Insulation	Indoor / Outdoor

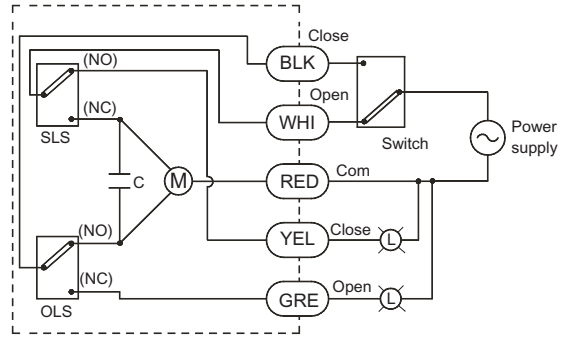


Wiring Sketch of Actuator

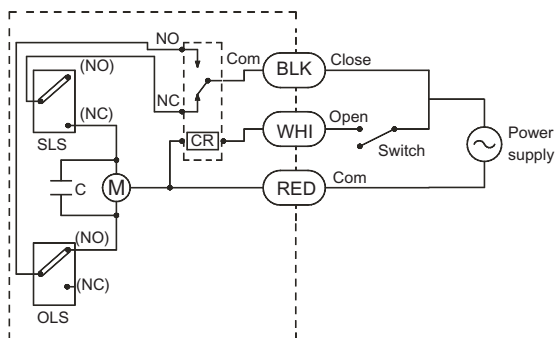
3 wires



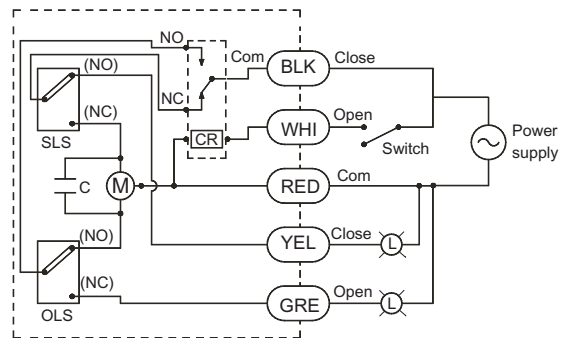
5 wires



3 wires with relay



5 wires with relay



Potentiometer unit 1k Ohm.(Optional accessories)

