

Queen

Direct acting 2-way solenoid valves normally open, energized to close



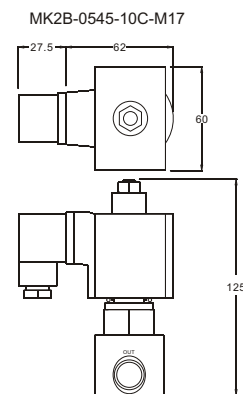
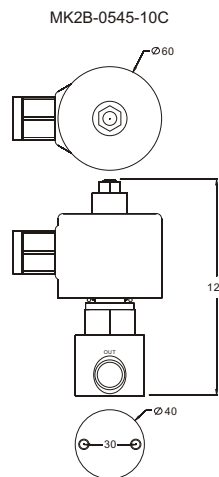
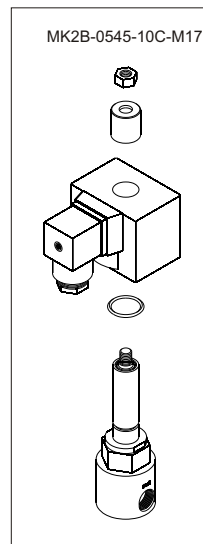
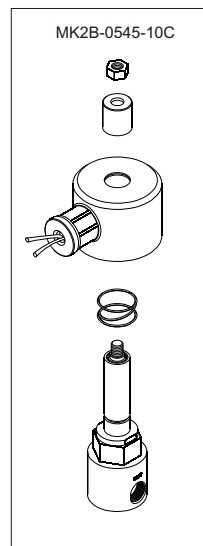
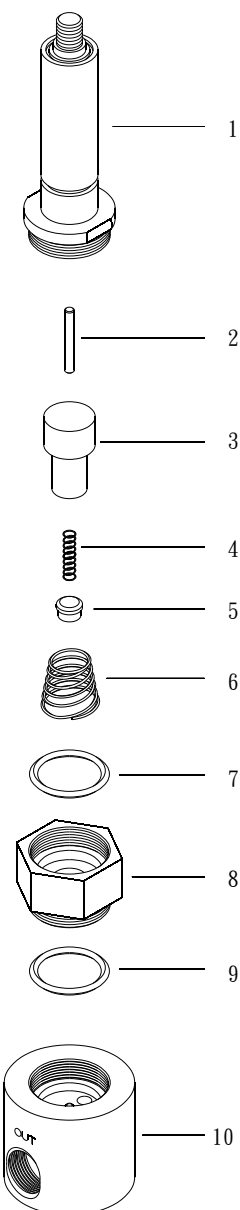
Features:

1. Suitable for air, inert gases, vacuum (10 TORR).
2. Direct acting solenoid valves, normally open.
3. Can be mounted in vertical and horizontal position.

Model	Connection	Orifice (mm)	Max. (Kg*f/cm ²)	Power Consumption VA	Cv Value	Max. Media Temp.	Mounting hole (mm)
			Air				A
MK2B-0545-10C(M17)	PT 3/8"	4.5	5	26	0.42	90°C	2-M6
MK2B-1230-10C(M17)		3.0	12		0.3		
MK2B-2520-10C(M17)		2.0	25		0.18		
MK2B-4016-10C(M17)		1.6	40		0.11		

* NPT on request.

* M17 (Molding coil).



NO.	Descriptions	Material
1	Plunger tube unit	SUS 304, KM-31
2	Needle stem	SUS 304
3	Sleeve of plug	SUS 304
4	Spring	SUS 304
5	Plunger seat	H NBR
6	Spring	SUS 304
7	O ring	NBR
8	Hexagon bushing nut	BSBF
9	O ring	NBR
10	Valve body	BSBF

* SUS 303L on request.