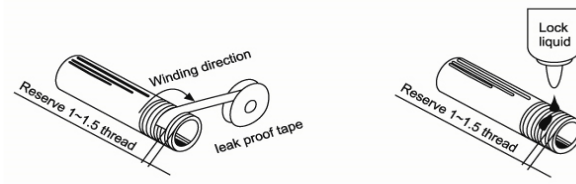
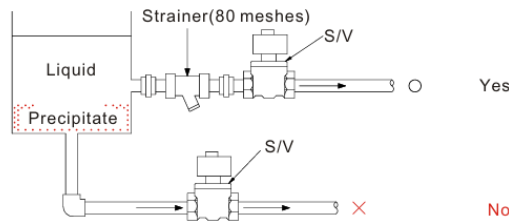


Solenoid Valve Installation Instruction

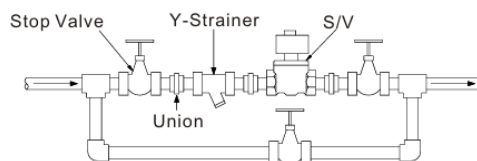
1. Dust, metal chip and tape seal in the pipes should be removed before installation.
2. When using seal tape on the connector or fittings, do not wrap the front two pitch of teeth by seal tape to prevent the seal tape from entering internal of solenoid valve.



3. For long-standing and normal operation, when the fluid is Air, Air filter should be installed before valve, when the medium is Steam or Water, 80 mesh Y-strainer should be installed before S/V.
4. For preventing frozen liquid and malfunction of S/V, pipes should be equipped with heater when the ambient temperature reaches 0°C below 0°C at freezing condition.
5. Make sure the bolt on the coil bonnet is tight properly to avoid making noise of cause the solenoid coil burned out when re-assembly or turning the coil enclosures.
6. Do not use media pressure over the specified pressure range in the catalogue. Please peruse the specified working pressure for different model numbers in the product's catalogue.
7. The voltage at range of 10% is allowed. For protecting the solenoid coil, do not use the voltage over 10% or less 10%.
8. Don't exceed or lower the maximum and minimum pressure rage when operating.
9. When valves are installed in the piping for liquid transfer, be sure to keep a certain height from bottom for tank nozzles thus the precipitation can be avoided passing through S/V.

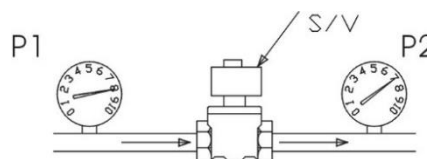


10. A by-pass is essential for the maintenance of S/V installed in pipe. Please refer to the sketch below as reference.



11. The following condition are necessary for using 2/2 pilot operated solenoid valves.

- Minimum operating differential pressure.
- Minimum operating flow rate.



12. To install kick pilot 2/2 solenoid valve the installation angle at vertical angle or 15° is required. (solenoid coil's location on the top)