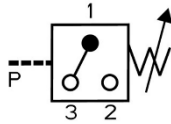


KWSL Series

KUHNWAY Pressure Switch



Order Information

KWSL - 35 - 1

↓ ↓

(1) (2)

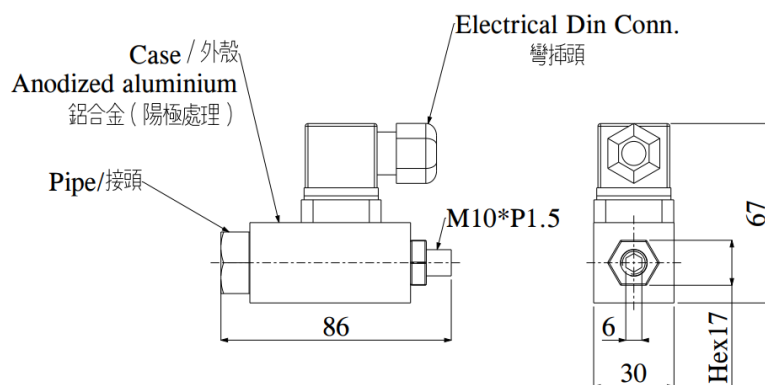
(1) Pressure Adjusting Range :

- 35 : 5 ~ 35 bar (Pmax : 150 bar)
- 70 : 10 ~ 70 bar (Pmax : 250 bar)
- 250 : 25 ~ 250 bar (Pmax : 300 bar)

(2) Threaded Type :

- 1 : 1/4" PT
- 2 : 1/4" NPT
- 4 : 1/4" BSP

Dimension (mm)



Specifications

No.	Specifications		
1	Medium	Mineral oil	
2	Change over freq.	60/min	
3	Repetition accuracy	1%	
4	Viscosity range	10 ~ 800 cst	
5	Operative life	1,000,000	
6	Protection	IP65	
7	Microswitch approved	UL, CSA, ENEC	
8	Max. voltage	30VDC	250VAC
9	Current	5A	5A