

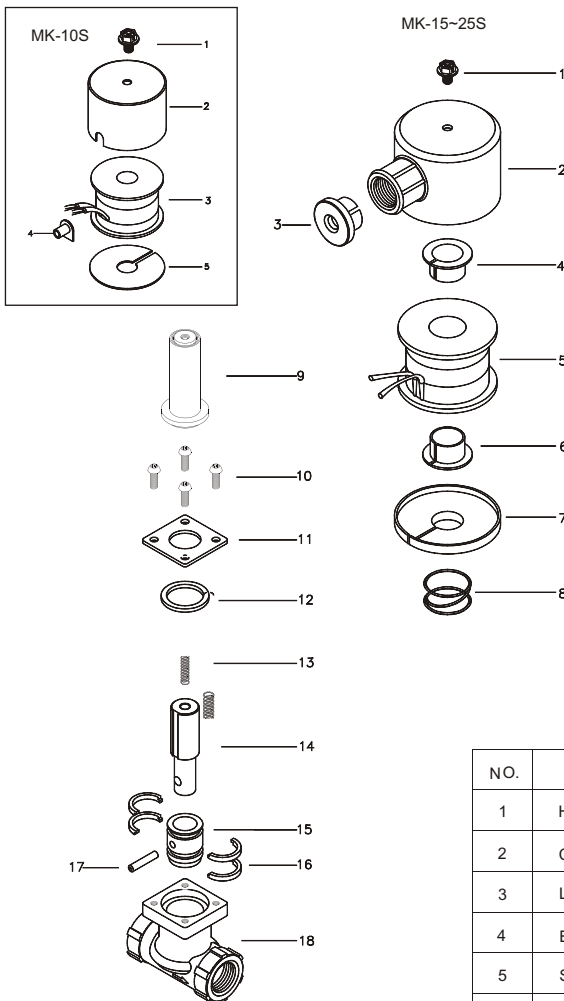


Features:

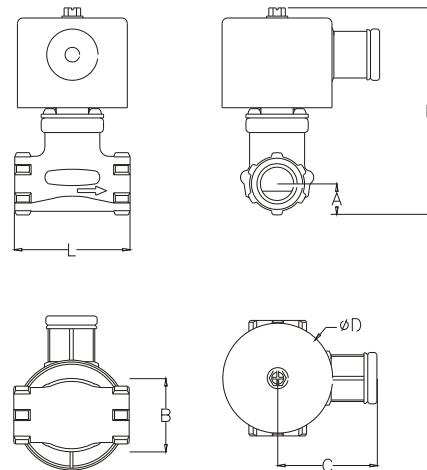
1. Suitable for steam, air, vacuum, inert gases, water, and oil(Below 50 cst).
2. Kick pilot operated, wide operating pressure range from 10 TORR to 10kg*/cm ,fast response, long life constructive device.
3. Can be mounted in vertical position or vertical ±15is allowed.
4. Fluid temperature from -10 °C (non-freezing) to 180 °C

Model	Connection	Orifice (mm)	Cv Value	Operating pressure (kg*/cm ²)			Max. Media Temp.	Power Consumption VA
				Steam	Water	Oil (Below 50cst)		
MK-10S	PT3/8"	10	1.3	0-10	0-8	0-7	180 °C	22
MK-15S	PT1/2"	14	3.0					26
MK-20S	PT3/4"	19	4.9					
MK-25S	PT1"	25	6.2					

* MK-10S on request.
* NPT on request.



Model	Connection	L (mm)	H (mm)	A (mm)	B (mm)	C (mm)	φ D (mm)
MK-10S	PT3/8"	53	90	13	24	56	62
MK-15S	PT1/2"	63	114	17	30		
MK-20S	PT3/4"	74	122	19	33		
MK-25S	PT1"	88	127	24	41		



NO.	Descriptions	Material	NO.	Descriptions	Material
1	Hexagon bolt	SWRM	10	Bolt	SUS 304
2	Coil bonnet	SPC	11	Plate	SPC
3	Lead cap	ABS	12	Packing	TEFLON
4	Bobbin sleeve	SPC	13	Plunger spring	SUS 304
5	Solenoid coil	H Class	14	Plunger	KM-31
6	Bobbin sleeve	SPC	15	Main valve	BC 6
7	Spacer	SPC	16	Piston ring	TEFLON
8	Coil spring	SWP2	17	Sleeve pin	SUS 303L
9	Plunger tube unit	SUS 304, KM-31	18	Valve body	BC 6