

Queen

Direct acting 2-way solenoid valves normally closed, energized to open

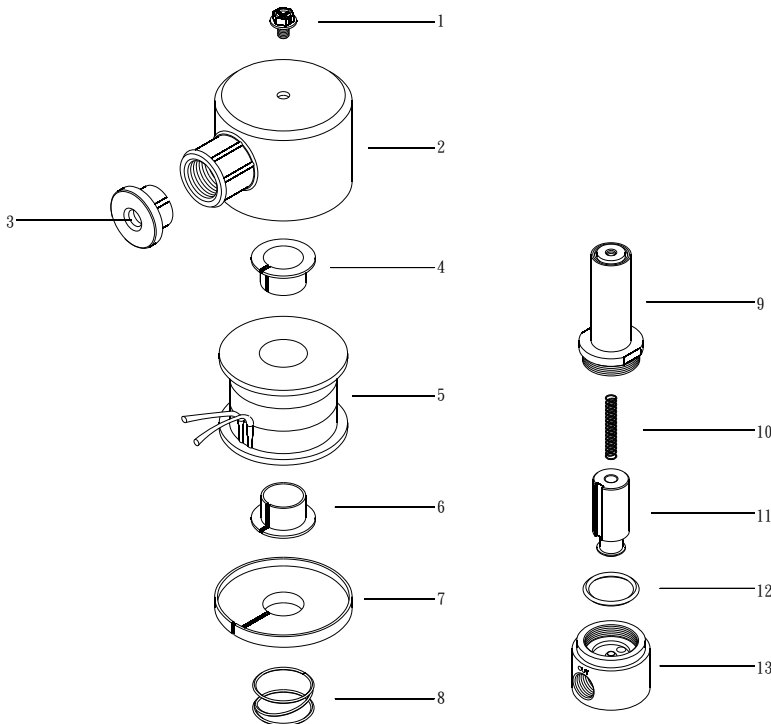
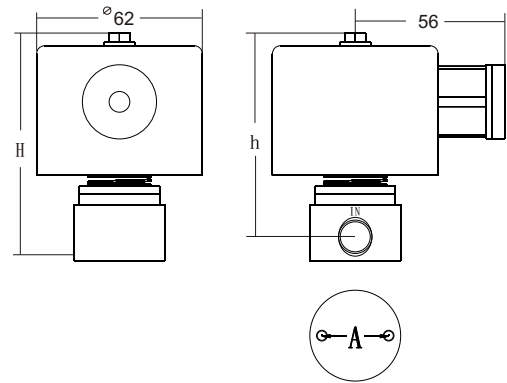


Features:

1. Suitable for air, inert gases, vacuum (10TORR), water, kerosene oil, and oil (Below 50cst).
2. Direct acting, wide operating pressure range from 10 TORR up to 100kg*/cm², fast response and excellent service life.
3. Can be mounted in vertical and horizontal position.

Model	Connection	Orifice (mm)	Max. (Kg*f/cm ²)		Power Consumption VA	Cv Value	Max. Media Temp.	Size (mm)			Mounting hole (mm)		Weight (g)
			Air	Water Oil				L	H	h	A		
MK2B-5030-8-SCS13	PT 1/4"	3	50	40	26	0.35	90 °C	34	85	76	25	2-M4X0.8	800
MK2B-10020-8-SCS13		2	100	80									

* 1/4" on request.
* NPT on request.



NO.	Descriptions	Material
1	Hexagon bolt	SWRM
2	Coil bonnet	SPC
3	Lead Cap	ABS
4	Bobbin sleeve	SPC
5	Coil	B Class
6	Bobbin sleeve	SPC
7	Spacer	SPC
8	Coil spring	SWP2
9	Packless a'ssy	SUS304, KM-31
10	Plunger spring	SUS 304
11	Plunger	KM-31
12	O ring	NBR
13	Valve body	SUS303L